

**ACPP Antibody (C-term)**  
**Purified Rabbit Polyclonal Antibody (Pab)**  
**Catalog # AP7592b**

**Specification**

---

**ACPP Antibody (C-term) - Product Information**

Application	WB, IHC-P,E
Primary Accession	<a href="#">P15309</a>
Reactivity	Human, Mouse, Rat
Host	Rabbit
Clonality	Polyclonal
Isotype	Rabbit IgG
Antigen Region	313-341

**ACPP Antibody (C-term) - Additional Information**

**Gene ID 55**

**Other Names**

Prostatic acid phosphatase, PAP, 5'-nucleotidase, 5'-NT, Ecto-5'-nucleotidase, Thiamine monophosphatase, TMPase, PAPf39, ACPP

**Target/Specificity**

This ACPP antibody is generated from rabbits immunized with a KLH conjugated synthetic peptide between 313-341 amino acids from the C-terminal region of human ACPP.

**Dilution**

WB~~1:500  
IHC-P~~1:10~50  
E~~Use at an assay dependent concentration.

**Format**

Purified polyclonal antibody supplied in PBS with 0.09% (W/V) sodium azide. This antibody is purified through a protein A column, followed by peptide affinity purification.

**Storage**

Maintain refrigerated at 2-8°C for up to 2 weeks. For long term storage store at -20°C in small aliquots to prevent freeze-thaw cycles.

**Precautions**

ACPP Antibody (C-term) is for research use only and not for use in diagnostic or therapeutic procedures.

**ACPP Antibody (C-term) - Protein Information**

**Name** ACP3 ([HGNC:125](#))

**Synonyms** ACPP

**Function** A non-specific tyrosine phosphatase that dephosphorylates a diverse number of substrates under acidic conditions (pH 4-6) including alkyl, aryl, and acyl orthophosphate monoesters and phosphorylated proteins (PubMed:[10506173](#), PubMed:[15280042](#), PubMed:[20498373](#), PubMed:[9584846](#)). Has lipid phosphatase activity and inactivates lysophosphatidic acid in seminal plasma (PubMed:[10506173](#), PubMed:[15280042](#)).

#### Cellular Location

[Isoform 1]: Secreted

#### Tissue Location

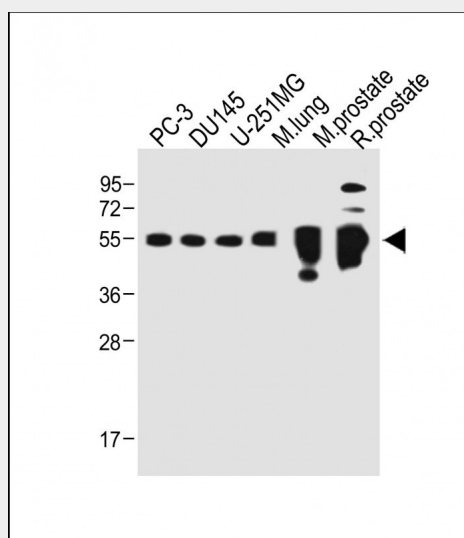
Highly expressed in the prostate, restricted to glandular and ductal epithelial cells. Also expressed in bladder, kidney, pancreas, lung, cervix, testis and ovary. Weak expression in a subset of pancreatic islet cells, squamous epithelia, the pilosebaceous unit, colonic neuroendocrine cells and skin adnexal structures. Low expression in prostate carcinoma cells and tissues

### ACPP Antibody (C-term) - Protocols

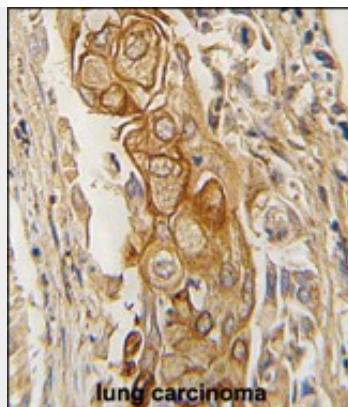
Provided below are standard protocols that you may find useful for product applications.

- [Western Blot](#)
- [Blocking Peptides](#)
- [Dot Blot](#)
- [Immunohistochemistry](#)
- [Immunofluorescence](#)
- [Immunoprecipitation](#)
- [Flow Cytometry](#)
- [Cell Culture](#)

### ACPP Antibody (C-term) - Images



All lanes : Anti-ACPP Antibody (C-term) at 1:500 dilution Lane 1: PC-3 whole cell lysate Lane 2: DU145 whole cell lysate Lane 3: U-251MG whole cell lysate Lane 4: Mouse lung whole tissue lysate Lane 5: Mouse prostate whole tissue lysate Lane 5: Rat prostate whole tissue lysate Lysates/proteins at 20 µg per lane. Secondary Goat Anti-Rabbit IgG, (H+L), Peroxidase conjugated at 1/10000 dilution. Predicted band size : 45 kDa Blocking/Dilution buffer: 5% NFDM/TBST.



Formalin-fixed and paraffin-embedded human lung carcinoma tissue reacted with ACPP antibody (C-term) (Cat.#AP7592b), which was peroxidase-conjugated to the secondary antibody, followed by DAB staining. This data demonstrates the use of this antibody for immunohistochemistry; clinical relevance has not been evaluated.

#### **ACPP Antibody (C-term) - Background**

ACPP is an enzyme which catalyzes the conversion of orthophosphoric monoester to alcohol and orthophosphate. It is synthesized under androgen regulation and is secreted by the epithelial cells of the prostate gland.

#### **ACPP Antibody (C-term) - References**

Quintero,I.B., Cancer Res. 67 (14), 6549-6554 (2007)  
Klyushnenkova,E.N., Prostate 67 (10), 1019-1028 (2007)  
Johnson,J.L., Biochem. J. 391 (PT 3), 699-710 (2005)